

## Obesity and kidney disease: hidden consequences of the epidemic

### *Obesidad y enfermedad renal: consecuencias ocultas de la epidemia*

Csaba P. Kovesdy<sup>1,2</sup>, Susan Furth<sup>3</sup>, Carmine Zoccali<sup>4</sup>  
on behalf of the World Kidney Day Steering Committee\*

<sup>1</sup>Division of Nephrology, Department of Medicine, University of Tennessee Health Science Center, Memphis, TN, United States

<sup>2</sup>Nephrology Section, Memphis VA Medical Center, Memphis, TN, United States

<sup>3</sup>Department of Pediatrics, Perelman School of Medicine at the University of Pennsylvania, Philadelphia, PA, United States

<sup>4</sup>CNR - IFC Clinical Epidemiology and Pathophysiology of Renal Diseases and Hypertension, Reggio Calabria, Italy

#### Abstract

Obesity has become a worldwide epidemic, and its prevalence has been projected to grow by 40% in the next decade. This increasing prevalence has implications for the risk of diabetes, cardiovascular disease and also for Chronic Kidney Disease. A high body mass index is one of the strongest risk factors for new-onset Chronic Kidney Disease. In individuals affected by obesity, a compensatory hyperfiltration occurs to meet the heightened metabolic demands of the increased body weight. The increase in intraglomerular pressure can damage the kidneys and raise the risk of developing Chronic Kidney Disease in the long-term. The incidence of obesity-related glomerulopathy has increased ten-fold in recent years. Obesity has also been shown to be a risk factor for nephrolithiasis, and for a number of malignancies including kidney cancer. This year the World Kidney Day promotes education on the harmful consequences of obesity and its association with kidney disease, advocating healthy lifestyle and health policy measures that makes preventive behaviors an affordable option.

**Key words:** Obesity, chronic kidney disease, nephrolithiasis, kidney cancer, prevention.

<http://doi.org/10.22265/acnef.4.1.262>

#### Resumen

La obesidad se ha convertido en una epidemia mundial, y se ha proyectado que su prevalencia se incrementará en un 40% en la próxima década. Esta creciente prevalencia supone implicaciones tanto para el riesgo de desarrollo de diabetes y enfermedades cardiovasculares como para el desarrollo de Enfermedad Renal Crónica. Un elevado índice de masa corporal es uno de los factores de riesgo más importantes para el desarrollo de Enfermedad Renal Crónica. En individuos afectados por la obesidad, tiene lugar una hiperfiltración compensatoria necesaria para alcanzar la alta demanda metabólica secundaria al aumento del peso corporal. El incremento de la presión intraglomerular puede generar daño renal y elevar el riesgo de desarrollar Enfermedad Renal Crónica a largo plazo. La incidencia de glomerulopatía asociada a obesidad se ha incrementado 10 veces en los últimos años. Así mismo se ha demostrado que la obesidad es un factor de riesgo para el desarrollo de nefrolitiasis y un número de neoplasias, incluyendo cáncer renal. Este año, el Día Mundial del Riñón promueve la educación a cerca de las consecuencias nocivas de la obesidad y su asociación con la enfermedad renal, abogando por un estilo de vida saludable y la implementación de políticas públicas de salud que promuevan medidas preventivas alcanzables.

**Palabras clave:** obesidad, enfermedad renal crónica, nefrolitiasis, cáncer renal, prevención

<http://doi.org/10.22265/acnef.4.1.262>



**Referenciar este artículo:** Kovesdy Csaba, Furth Susan, Zoccali Carmine, et al. \*Members of the World Kidney Day Steering Committee are: Philip Kam Tao Li, Guillermo Garcia-Garcia, Mohammed Benghanem-Gharbi, Rik Bollaert, Sophie Dupuis, Timur Erk, Kamyar Kalantar-Zadeh, Csaba Kovesdy, Charlotte Osafo, Miguel C. Riella, Elena Zakharova. Obesity and kidney disease: hidden consequences of the epidemic. Rev. Colomb. Nefrol. 2017;4(1): 112 - 121.

Correspondence: World Kidney Day, International Society of Nephrology, in collaboration with International Federation of Kidney Foundation, Rue de Fabriques 1B, 1000, Brussels, myriam@worldkidneyday.org

Received: 01-12-16 • Accepted: 02-02-17 • On line: 07-02-17

## Introduction

In 2014, over 600 million adults worldwide, 18 years and older, were obese. Obesity is a potent risk factor for the development of kidney disease. It increases the risk of developing major risk factors for Chronic Kidney Disease (CKD), like diabetes and hypertension, and it has a direct impact on the development of CKD and end-stage renal disease (ESRD). In individuals affected by obesity, a (likely) compensatory mechanism of hyperfiltration occurs to meet the heightened metabolic demands of the increased body weight. The increase in intraglomerular pressure can damage the kidney structure and raise the risk of developing CKD in the long-term.

The good news is that obesity, as well as the related CKD, are largely preventable. Education and awareness of the risks of obesity and a healthy lifestyle, including proper nutrition and exercise, can dramatically help in preventing obesity and kidney disease. This article reviews the association of obesity with kidney disease on the occasion of the 2017 World Kidney Day.

## Epidemiology of obesity in adults and children

Over the last 3 decades, the prevalence of overweight and obese adults ( $\text{BMI} \geq 25 \text{ kg/m}^2$ ) worldwide has increased substantially.<sup>1</sup> In the US, the age-adjusted prevalence of obesity in 2013-2014 was 35% among men and 40.4% among women<sup>2</sup>. The problem of obesity also affects children. In the US in 2011-2014, the prevalence of obesity was 17% and extreme obesity 5.8% among youth 2-19 years of age. The rise in obesity prevalence is also a worldwide concern,<sup>3,4</sup> as it is projected to grow by 40% across the globe in the next decade. Low- and middle-income countries are now showing evidence of transitioning from normal weight to overweight and obesity as parts of Europe and the United States did decades ago<sup>5</sup>. This increasing prevalence of obesity has implications for cardiovascular di-

sease (CVD) and also for CKD. A high body mass index (BMI) is one of the strongest risk factors for new-onset CKD<sup>6,7</sup>.

Definitions of obesity are most often based on BMI (i.e. weight [kilograms] divided by the square of his or her height [meters]). A BMI between 18.5 and 25  $\text{kg/m}^2$  is considered by the World Health Organization (WHO) to be normal weight, a BMI between 25 and 30  $\text{kg/m}^2$  as overweight, and a BMI of  $>30 \text{ kg/m}^2$  as obese. Although BMI is easy to calculate, it is a poor estimate of fat mass distribution, as muscular individuals or those with more subcutaneous fat may have a BMI as high as individuals with larger intraabdominal (visceral) fat. The latter type of high BMI is associated with substantially higher risk of metabolic and cardiovascular disease. Alternative parameters to more accurately capture visceral fat include waist circumference (WC) and a waist hip ratio (WHR) of  $>102 \text{ cm}$  and 0.9, respectively, for men and  $>88 \text{ cm}$  and  $>0.8$ , respectively, for women. WHR has been shown to be superior to BMI for the correct classification of obesity in CKD.

## Association of obesity with CKD and other renal complications

Numerous population based studies have shown an association between measures of obesity and both the development and the progression of CKD (**Table 1**). Higher BMI is associated with the presence<sup>8</sup> and development<sup>9-11</sup> of proteinuria in individuals without kidney disease. Furthermore, in numerous large population-based studies, higher BMI appears associated with the presence<sup>8,12</sup> and development of low estimated GFR,<sup>9,10,13</sup> with more rapid loss of estimated GFR over time,<sup>14</sup> and with the incidence of ESRD<sup>15-18</sup>. Elevated BMI levels, class II obesity and above, have been associated with more rapid progression of CKD in patients with pre-existing CKD<sup>19</sup>. A few studies examining the association of abdominal obesity using WHR or WC with CKD, describe an association between higher girth and albuminuria<sup>20</sup>, decreased GFR<sup>8</sup> or incident ESRD<sup>21</sup> independent of BMI level.

Table 1.

Studies examining the association of obesity with various measures of CKD					
Study	Patients	Exposure	Outcomes	Results	Comments
Prevention of Renal and Vascular End-Stage Disease (PREVEND) Study <sup>8</sup>	7,676 Dutch individuals without diabetes	Elevated BMI (overweight and obese*), and central fat distribution (waist-hip ratio)	-Presence of urine albumin 30-300 mg/24h -Elevated and diminished GFR	-Obese + central fat: higher risk of albuminuria -Obese +/- central fat: higher risk of elevated GFR -Central fat +/- obesity associated with diminished filtration	Cross sectional analysis
Multinational study of hypertensive outpatients <sup>20</sup>	20,828 patients from 26 countries	BMI and waist circumference	Prevalence of albuminuria by dip stick	Higher waist circumference associated with albuminuria independent of BMI	Cross sectional analysis
Framingham Multi-Detector Computed Tomography (MDCT) cohort <sup>22</sup>	3,099 individuals	Visceral adipose tissue (VAT) and subcutaneous adipose tissue (SAT)	Prevalence of UACR >25 mg/g in women and >17 mg/g in men	VAT associated with albuminuria in men, but not in women	Cross sectional analysis
CARDIA (Coronary Artery Risk Development in Young Adults) study <sup>11</sup>	2,354 community-dwelling individuals with normal kidney function aged 28-40 years	-Obesity (BMI >30 kg/m <sup>2</sup> ) -Diet and lifestyle-related factors	Incident microalbuminuria	Obesity (OR 1.9) and unhealthy diet (OR 2.0) associated with incident albuminuria	Low number of events
Hypertension Detection and Follow-Up Program <sup>10</sup>	5,897 hypertensive adults	Overweight and obese BMI* vs. normal BMI	Incident CKD (1+ or greater proteinuria on urinalysis and/or an eGFR <60 mL/min/1.73 m <sup>2</sup> )	Both overweight (OR 1.21) and obesity (OR 1.40) associated with incident CKD	Results unchanged after excluding diabetics
Framingham Offspring Study <sup>9</sup>	2,676 individuals free of CKD stage 3	High vs. normal BMI*	-Incident CKD stage 3 -Incident proteinuria	-Higher BMI not associated with CKD3 after adjustments -Higher BMI associated with increased odds of incident proteinuria	Predominantly white, limited geography
Physicians' Health Study <sup>13</sup>	11,104 initially healthy men in US	-BMI quintiles -Increase in BMI over time (vs. stable BMI)	Incident eGFR <60 mL/min/1.73 m <sup>2</sup>	-Higher baseline BMI and increase in BMI over time both associated with higher risk of incident CKD	Exclusively men
Nation-wide US Veterans Administration cohort <sup>14</sup>	3,376,187 US veterans with baseline eGFR ≥60 mL/min/1.73 m <sup>2</sup>	BMI categories from <20 to >50 kg/m <sup>2</sup>	Rapid decline in kidney function (negative eGFR slope of >5 mL/min/1.73 m <sup>2</sup> )	BMI >30 kg/m <sup>2</sup> associated with rapid loss of kidney function	Associations more accentuated in older individuals
Nation-wide population-based study from Sweden <sup>12</sup>	926 Swedes with moderate/advanced CKD compared to 998 controls	BMI ≥25 vs. <25 kg/m <sup>2</sup>	CKD vs. no CKD	Higher BMI associated with 3x higher risk of CKD	-Risk strongest in diabetics, but also significantly higher in non-diabetics -Cross sectional analysis
Nation-wide population based study in Israel <sup>17</sup>	1,194,704 adolescent males and females examined for military service	Elevated BMI (overweight and obesity) vs. normal BMI*	Incident ESRD	Overweight (HR 3.0) and obesity (HR 6.89) associated with higher risk of ESRD	Associations strongest for diabetic ESRD, but also significantly higher for non-diabetic ESRD
The Nord-Trøndelag Health Study (HUNT-1) <sup>15</sup>	74,986 Norwegian adults	BMI categories*	Incidence of ESRD or renal death	BMI >30 kg/m <sup>2</sup> associated with worse outcomes	Associations not present in individuals with BL <120/80 mmHg
Community-based screening in Okinawa, Japan <sup>16</sup>	100,753 individuals >20 years old	BMI quartiles	Incidence of ESRD	Higher BMI associated with increased risk of ESRD in men, but not in women	Average BMI lower in Japan compared to Western countries
Nation-wide US Veterans Administration cohort <sup>19</sup>	453,946 US veterans with baseline eGFR <60 ml/min per 1.73 m <sup>2</sup>	BMI categories from <20 to >50 kg/m <sup>2</sup>	-Incidence of ESRD -Doubling of serum creatinine -Slopes of eGFR	Moderate and severe obesity associated with worse renal outcomes	Associations present but weaker in patients with more advanced CKD
Kaiser Permanente Northern California <sup>18</sup>	320,252 adults with and without baseline CKD	Overweight, class I, II and extreme obesity; vs. normal BMI*	Incidence of ESRD	Linearly higher risk of ESRD with higher BMI categories	Associations remained present after adjustment for DM, hypertension and baseline CKD
REGARDS (Reasons for Geographic and Racial Differences in Stroke) Study <sup>21</sup>	30,239 individuals	Elevated waist circumference or BMI	Incidence of ESRD	BMI above normal not associated with ESRD after adjustment for waist circumference -Higher waist circumference associated with ESRD	Association of waist circumference with ESRD became on-significant after adjustment for comorbidities and baseline eGFR and proteinuria

\*Normal weight: BMI 18.5 to 24.9 kg/m<sup>2</sup>; overweight: BMI 25.0 to 29.9 kg/m<sup>2</sup>; class I obesity: BMI 30.0 to 34.9 kg/m<sup>2</sup>; class II obesity: BMI 35.0 to 39.9 kg/m<sup>2</sup>; class III obesity: BMI ≥40 kg/m<sup>2</sup>

BMI, body mass index; CKD, chronic kidney disease; DM, diabetes mellitus; eGFR, estimated glomerular filtration rate; ESRD, end stage renal disease; HR, hazard ratio; OR, odds ratio; UACR, urine albumin-creatinine ratio.

Higher visceral adipose tissue measured by computed tomography has been associated with a higher prevalence of albuminuria in men<sup>22</sup>. The observation of a BMI-independent association between abdominal obesity and poorer renal outcomes is also described in relationship with mortality in patients with ESRD<sup>23</sup> and kidney transplant<sup>24</sup>, and suggests a direct role of visceral adiposity. In general, the associations between obesity and poorer renal outcomes persist even after adjustments for possible mediators of obesity's cardiovascular and metabolic effects, such as high blood pressure and diabetes mellitus, suggesting that obesity may affect kidney function through mechanisms in part unrelated to these complications (vide infra).

The deleterious effect of obesity on the kidneys extends to other complications such as nephrolithiasis and kidney malignancies. Higher BMI is associated with an increased prevalence<sup>25</sup> and incidence<sup>26;27</sup> of nephrolithiasis. Furthermore, weight gain over time, and higher baseline WC were also associated with higher incidence of nephrolithiasis<sup>27</sup>. Obesity is associated with various types of malignancies, particularly cancers of the kidneys. In a population-based study of 5.24 million individuals from the UK, a 5 kg/m<sup>2</sup> higher BMI was associated with a 25% higher risk of kidney cancers, with 10% of all kidney cancers attributable to excess weight<sup>28</sup>. Another large analysis examining the global burden of obesity on malignancies estimated that 17% and 26% of all kidney cancers in men and women, respectively, were attributable to excess weight<sup>29</sup>. The association between obesity and kidney cancers was consistent in both men and women, and across populations from different parts of the world in a meta-analysis that included data from 221 studies (of which 17 examined kidney cancers)<sup>30</sup>. Among the cancers examined in this meta-analysis, kidney cancers had the third highest risk associated with obesity (relative risk per 5 kg/m<sup>2</sup> higher BMI: 1.24, 95%CI 1.20-1.28, p<0.0001)<sup>30</sup>.

## Mechanisms of action underlying the renal effects of obesity

Obesity results in complex metabolic abnormalities which have wide-ranging effects on diseases affecting the kidneys. The exact mechanisms whereby obesity may worsen or cause CKD remain unclear. The fact that most obese individuals never develop CKD, and the distinction of up to as many as 25% of obese individuals as “metabolically healthy” suggests that increased weight alone is not sufficient to induce kidney damage<sup>31</sup>. Some of the deleterious renal consequences of obesity may be mediated by downstream comorbid conditions such as diabetes mellitus or hypertension, but there are also effects of adiposity which could impact the kidneys directly, induced by the endocrine activity of the adipose tissue via production of (among others) adiponectin<sup>32</sup>, leptin<sup>33</sup> and resistin<sup>34</sup> (Figure 1). These include the development of inflammation<sup>35</sup>, oxidative stress<sup>36</sup>, abnormal lipid metabolism<sup>37</sup>, activation of the renin-angiotensin-aldosterone system<sup>38</sup>, and increased production of insulin and insulin resistance<sup>39;40</sup>.

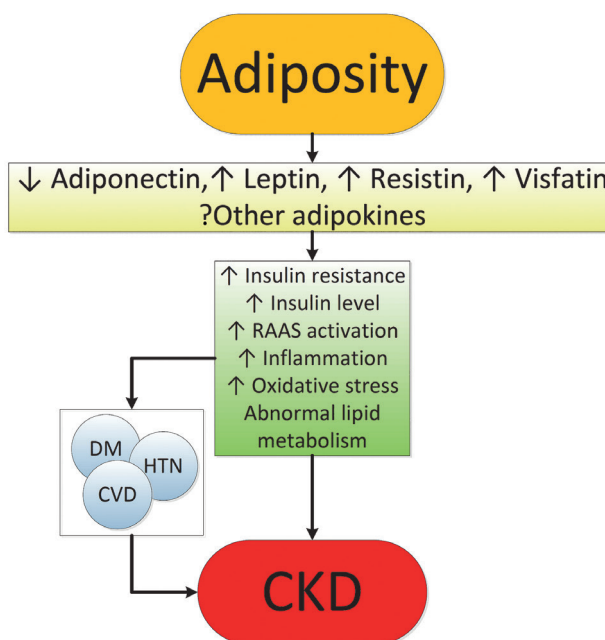
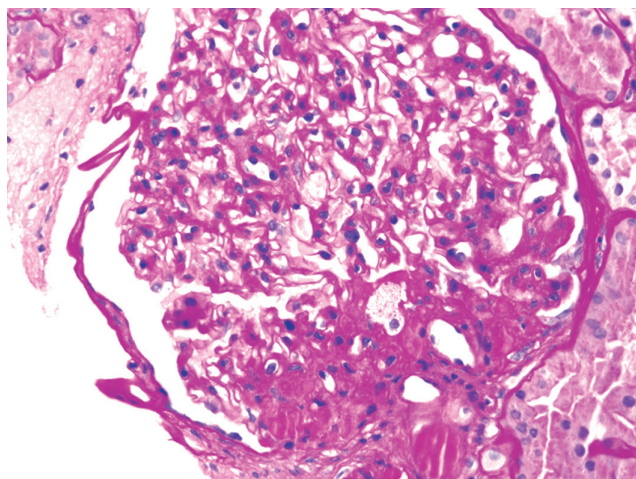


Figure 1. Putative mechanisms of action whereby obesity causes chronic kidney disease.



These various effects result in specific pathologic changes in the kidneys<sup>41</sup> which could underlie the higher risk of CKD seen in observational studies. These include ectopic lipid accumulation<sup>42</sup> and increased deposition of renal sinus fat<sup>43;44</sup>, the development of glomerular hypertension and increased glomerular permeability caused by hyperfiltration-related glomerular filtration barrier injury<sup>45</sup>, and ultimately the development of glomerulomegaly<sup>46</sup>, and focal or segmental glomerulosclerosis<sup>41</sup> (**Figure 2**). The incidence of the so-called obesity-related glomerulopathy (ORG) has increased ten-fold between 1986 and 2000<sup>41</sup>. Importantly, ORG often presents along with pathophysiologic processes related to other conditions or advanced age, conspiring to result in more accentuated kidney damage in patients with high blood pressure<sup>47</sup> or in the elderly<sup>14,39</sup>.



**Figure 2.** Obesity-related perihilar focal segmental glomerulosclerosis on a background of glomerulomegaly. Periodic Acid-Schiff stain, original magnification 400x.

Obesity is associated with a number of risk factors contributing to the higher incidence and prevalence of nephrolithiasis. Higher body weight is associated with lower urine pH<sup>48</sup> and increased urinary oxalate<sup>49</sup>, uric acid, sodium and phosphate excretion<sup>50</sup>. Diets richer in protein and sodium may lead to a more acidic urine and decrease in urinary citrate, also contributing to kidney stone risk. The insulin resistance characteristic of obesity may also predispose to nephrolithiasis<sup>51</sup> through its impact on

tubular Na-H exchanger<sup>52</sup> and ammoniogenesis<sup>53</sup>, and the promotion of an acidic milieu<sup>54</sup>. Complicating the picture is the fact that some weight loss therapies result in a worsening, rather than an improvement in the risk for kidney stone formation; e.g. gastric surgery can lead to a substantial increase in enteral oxalate absorption and enhanced risk of nephrolithiasis<sup>55</sup>.

The mechanisms behind the increased risk of kidney cancers observed in obese individuals are less well characterized. Insulin resistance, and the consequent chronic hyperinsulinemia and increased production of insulin-like growth factor 1 and numerous complex secondary humoral effects may exert stimulating effects on the growth of various types of tumor cells<sup>56</sup>. More recently, the endocrine functions of adipose tissue<sup>57</sup>, its effects on immunity<sup>58</sup>, and the generation of an inflammatory milieu with complex effects on cancers<sup>59;60</sup> have emerged as additional explanations.

### **Obesity in patients with advanced kidney disease: The need for a nuanced approach**

Considering the above evidence about the overwhelmingly deleterious effects of obesity on various disease processes, it is seemingly counterintuitive that obesity has been consistently associated with lower mortality rates in patients with advanced CKD<sup>19,61</sup> and ESRD<sup>62-63</sup>. Similar “paradoxical” associations have also been described in other populations, such as in patients with congestive heart failure<sup>64</sup>, chronic obstructive pulmonary disease<sup>65</sup>, rheumatoid arthritis<sup>66</sup>, and even in old individuals<sup>67</sup>. It is possible that the seemingly protective effect of a high BMI is the result of the imperfection of BMI as a measure of obesity, as it does not differentiate the effects of adiposity from those of higher non-adipose tissue. Indeed, studies that separated the effects of a higher waist circumference from those of higher BMI showed a reversal of the inverse association with mortality<sup>23-24</sup>. Higher muscle mass has also been shown to explain at least

some of the positive effects attributed to elevated BMI<sup>63-68</sup>. However, there is also evidence to suggest that higher adiposity, especially subcutaneous (non-visceral) fat, may also be associated with better outcomes in ESRD patients<sup>62</sup>. Such benefits may indeed be present in patients who have very low short term life expectancy, such as most ESRD patients<sup>69</sup>. Indeed, some studies that examined the association of BMI with time-dependent survival in ESRD have shown a marked contrast between protective short term effects vs. deleterious longer term effects of higher BMI<sup>70</sup>. There are several putative short term benefits that higher body mass could portend, especially to sicker individuals. These include a benefit from the better nutritional status typically seen in obese individuals, and which provides better protein and energy reserves in the face of acute illness, and a higher muscle mass with enhanced antioxidant capacity<sup>63</sup> and lower circulating actin and higher plasma gelsolin levels<sup>71</sup>, which are associated with better outcomes. Other hypothetically beneficial characteristics of obesity include a more stable hemodynamic status with mitigation of stress responses and heightened sympathetic and renin-angiotensin activity<sup>72</sup>; increased production of adiponectines<sup>73</sup> and soluble tumor necrosis factor alfa receptors<sup>74</sup> by adipose tissue neutralizing the adverse effects of tumor necrosis factor alfa; enhanced binding of circulating endotoxins<sup>75</sup> by the characteristically higher cholesterol levels seen in obesity; and sequestration of uremic toxins by adipose tissue<sup>76</sup>.

### **Potential interventions for management of obesity**

Obesity engenders kidney injury via direct mechanisms through deranged synthesis of various adipose tissue cytokines with nephrotoxic potential, as well as indirectly by triggering diabetes and hypertension, i.e. two conditions that rank among the strongest risk factors for CKD. Perhaps due to the survival advantage of obesity in CKD, the prevalence of end stage kidney disease is on the rise

both in the USA<sup>77</sup> and in Europe<sup>78</sup>. Strategies for controlling the obesity related CKD epidemic at population level and for countering the evolution of CKD toward kidney failure in obese patients represent the most tantalizing task that today's health planners, health managers and nephrologists face.

#### **Countering CKD at population level**

Calls for public health interventions in the community to prevent and treat CKD at an early stage have been made by major renal associations, including the International Society of Nephrology (ISN), International Federation of the Kidney Foundation (IFKF), the European renal association (ERA-EDTA) and various national societies. In the USA, Healthy People 2020, a program that sets 10-year health targets for health promotion and prevention goals, focuses both on CKD and obesity. Surveys to detect obese patients, particularly those with a high risk of CKD (e.g. hypertensive and/or diabetic obese people) and those receiving suboptimal care to inform these patients of the potential risk for CKD they are exposed to, is the first step towards developing public health interventions. Acquiring evidence that current interventions to reduce CKD risk in the obese are efficacious and deployable, is an urgent priority to set goals and means for risk modification. Appropriate documentation of existing knowledge distilling the risk and the benefits of primary and secondary prevention interventions in obese people, and new trials in this population to fill knowledge gaps (see below) are needed. Finally, surveillance programs that monitor progress on the detection of at-risk individuals and the effectiveness of prevention programs being deployed<sup>79</sup> constitute the third, fundamental element for establishing efficacious CKD prevention plans at population level.

A successful surveillance system for CKD has already been implemented in some places such as the United Kingdom (UK).<sup>80</sup> A campaign to disseminate and apply K-DOQI CKD guidelines in primary care within the UK National Health Service was launched. This progressively increased the

adoption of K-DOQI guidelines and, also thanks to specific incentives for UK general physicians to detect CKD, led to an impressive improvement in the detection and care of CKD, i.e. better control of hypertension and increased use of angiotensin-converting enzyme and angiotensin receptor blockers<sup>80</sup>. This system may serve as a platform to improve the prevention of obesity-related CKD. Campaigns aiming at reducing the obesity burden are now at center stage worldwide and are strongly recommended by the WHO and it is expected that these campaigns will reduce the incidence of obesity-related complications, including CKD. However obesity-related goals in obese CKD patients remain vaguely formulated, largely because of the paucity of high-level evidence intervention studies to modify obesity in CKD patients<sup>81</sup>. Prevention of CKD progression in obese people with CKD

Observational studies in metabolically healthy obese subjects show that the obese phenotype unassociated with metabolic abnormalities per se predicts a higher risk for incident CKD<sup>82</sup> suggesting that obesity per se may engender renal dysfunction and kidney damage even without diabetes or hypertension (*vide supra*). In overweight or obese diabetic patients, a lifestyle intervention including caloric restriction and increased physical activity compared with a standard follow up based on education and support to sustain diabetes treatment reduced the risk for incident CKD by 30%, although it did not affect the incidence of cardiovascular events<sup>83</sup>. Such a protective effect was partly due to reductions in body weight, HbA1c, and systolic BP. No safety concerns regarding kidney-related adverse events were seen<sup>83</sup>. In a recent meta-analysis collating experimental studies in obese CKD patients, interventions aimed at reducing body weight showed coherent reductions in blood pressure, glomerular hyper-filtration and proteinuria<sup>81</sup>. A thorough post-hoc analysis of the REIN study showed that the nephron-protective effect of ACE inhibition in proteinuric CKD patients was maximal in obese

CKD patients, but minimal in CKD patients with normal or low BMI<sup>84</sup>. Of note, bariatric surgical intervention have been suggested for selected CKD and ESRD patients including dialysis patients who are waitlisted for kidney transplantation<sup>85-87</sup>.

Globally, these experimental findings provide a proof of concept for the usefulness of weight reduction and ACE inhibition interventions in the treatment of CKD in the obese. Studies showing a survival benefit of increased BMI in CKD patients, however, remain to be explained<sup>88</sup>. These findings limit our ability to make strong recommendations about the usefulness and the safety of weight reduction among individuals with more advanced stages of CKD. Lifestyle recommendations to reduce body weight in obese people at risk for CKD and in those with early CKD appear justified, particularly recommendations for the control of diabetes and hypertension. As the independent effect of obesity control on the incidence and progression of CKD is difficult to disentangle from the effects of hypertension and type 2 diabetes, recommendation of weight loss in the minority of metabolically healthy, non-hypertensive obese patients remains unwarranted. These considerations suggest that a therapeutic approach to overweight and obesity in patients with advanced CKD or other significant comorbid conditions has to be pursued carefully, with proper considerations of the expected benefits and potential complications of weight loss over the life span of the individual patient.

## Conclusions

The worldwide epidemic of obesity affects the Earth's population in many ways. Diseases of the kidneys, including CKD, nephrolithiasis and kidney cancers are among the more insidious effects of obesity, but which nonetheless have wide ranging deleterious consequences, ultimately leading to significant excess morbidity and mortality and excess costs to individuals and the entire society.

Population-wide interventions to control obesity could have beneficial effects in preventing the development, or delaying the progression of CKD. It is incumbent upon the entire healthcare community to devise long-ranging strategies towards improving the understanding of the links between obesity and kidney diseases, and to determine optimal strategies to stem the tide. The 2017 World Kidney Day is an important opportunity to increase education and awareness to that end.

### **Ethical disclosures**

#### **Protection of human and animal subjects**

The authors declare that no experiments were performed on humans or animals for this study.

10.22265/acnef.4.1.262

### **Funding**

The authors expressly state that there is no conflict of interest.



## References

1. Forouzanfar MH, Alexander L, Anderson HR, Bachman VF, Biryukov S, Brauer M, Burnett R, et al. RA: Global, regional, and national comparative risk assessment of 79 behavioural, environmental and occupational, and metabolic risks or clusters of risks in 188 countries, 1990-2013: a systematic analysis for the Global Burden of Disease Study 2013. *Lancet* 386:2287-2323, 2015
2. Flegal KM, Kruszon-Moran D, Carroll MD, Fryar CD, Ogden CL: Trends in Obesity Among Adults in the United States, 2005 to 2014. *JAMA* 315:2284-2291, 2016
3. Cattaneo A, Monasta L, Stamatakis E, Lioret S, Castetbon K, Frenken F, Manios Y, Moschonis G, Savva S, Zaborskis A, Rito AI, Nanu M, Vignerova J, Caroli M, Ludvigsson J, Koch FS, Serra-Majem L, Szponar L, van LF, Brug J: Overweight and obesity in infants and pre-school children in the European Union: a review of existing data. *Obes Rev* 11:389-398, 2010
4. Olaya B, Moneta MV, Pez O, Bitfoi A, Carta MG, Eke C, Goelitz D, Keyes KM, Kuijpers R, Lesinskiene S, Mihova Z, Otten R, Fermanian C, Haro JM, Kovess V: Country-level and individual correlates of overweight and obesity among primary school children: a cross-sectional study in seven European countries. *BMC Public Health* 15:475, 2015
5. Subramanian SV, Perkins JM, Ozaltin E, Davey SG: Weight of nations: a socioeconomic analysis of women in low- to middle-income countries. *Am J Clin Nutr* 93:413-421, 2011
6. Tsujimoto T, Sairenchi T, Iso H, Irie F, Yamagishi K, Watanabe H, Tanaka K, Muto T, Ota H: The dose-response relationship between body mass index and the risk of incident stage  $\geq 3$  chronic kidney disease in a general Japanese population: the Ibaraki prefectural health study (IPHS). *J Epidemiol* 24:444-451, 2014
7. Elsayed EF, Sarnak MJ, Tighiouart H, Griffith JL, Kurth T, Salem DN, Levey AS, Weiner DE: Waist-to-hip ratio, body mass index, and subsequent kidney disease and death. *Am J Kidney Dis* 52:29-38, 2008
8. Pinto-Sietsma SJ, Navis G, Janssen WM, de ZD, Gans RO, de Jong PE: A central body fat distribution is related to renal function impairment, even in lean subjects. *Am J Kidney Dis* 41:733-741, 2003
9. Foster MC, Hwang SJ, Larson MG, Lichtman JH, Parikh NI, Vasan RS, Levy D, Fox CS: Overweight, obesity, and the development of stage 3 CKD: the Framingham Heart Study. *Am J Kidney Dis* 52:39-48, 2008
10. Kramer H, Luke A, Bidani A, Cao G, Cooper R, McGee D: Obesity and prevalent and incident CKD: the Hypertension Detection and Follow-Up Program. *Am J Kidney Dis* 46:587-594, 2005
11. Chang A, Van HL, Jacobs DR, Jr., Liu K, Muntner P, Newsome B, Shoham DA, Durazo-Arvizu R, Bibbins-Domingo K, Reis J, Kramer H: Lifestyle-related factors, obesity, and incident microalbuminuria: the CARDIA (Coronary Artery Risk Development in Young Adults) study. *Am J Kidney Dis* 62:267-275, 2013
12. Ejerblad E, Fored CM, Lindblad P, Fryzek J, McLaughlin JK, Nyren O: Obesity and risk for chronic renal failure. *J Am Soc Nephrol* 17:1695-1702, 2006
13. Gelber RP, Kurth T, Kausz AT, Manson JE, Buring JE, Levey AS, Gaziano JM: Association between body mass index and CKD in apparently healthy men. *Am J Kidney Dis* 46:871-880, 2005
14. Lu JL, Molnar MZ, Naseer A, Mikkelsen MK, Kalantar-Zadeh K, Kovesdy CP: Association of age and BMI with kidney function and mortality: a cohort study. *Lancet Diabetes Endocrinol* 3:704-714, 2015
15. Munkhaugen J, Lydersen S, Wideroe TE, Hallan S: Prehypertension, obesity, and risk of kidney disease: 20-year follow-up of the HUNT I study in Norway. *Am J Kidney Dis* 54:638-646, 2009
16. Iseki K, Ikemiya Y, Kinjo K, Inoue T, Iseki C, Takishita S: Body mass index and the risk of development of end-stage renal disease in a screened cohort. *Kidney Int* 65:1870-1876, 2004
17. Vivante A, Golan E, Tzur D, Leiba A, Tirosh A, Skorecki K, Calderon-Margalit R: Body mass index in 1.2 million adolescents and risk for end-stage renal disease. *Arch Intern Med* 172:1644-1650, 2012

18. Hsu C, McCulloch C, Iribarren C, Darbinian J, Go A: Body mass index and risk for end-stage renal disease. *Ann Intern Med* 144:21-28, 2006
19. Lu JL, Kalantar-Zadeh K, Ma JZ, Quarles LD, Kovesdy CP: Association of body mass index with outcomes in patients with CKD. *J Am Soc Nephrol* 25:2088-2096, 2014
20. Thoenes M, Reil JC, Khan BV, Bramlage P, Volpe M, Kirch W, Bohm M: Abdominal obesity is associated with microalbuminuria and an elevated cardiovascular risk profile in patients with hypertension. *Vasc Health Risk Manag* 5:577-585, 2009
21. Kramer H, Gutierrez OM, Judd SE, Muntner P, Warnock DG, Tanner RM, Panwar B, Shoham DA, McClellan W: Waist Circumference, Body Mass Index, and ESRD in the REGARDS (Reasons for Geographic and Racial Differences in Stroke) Study. *Am J Kidney Dis* 67:62-69, 2016
22. Foster MC, Hwang SJ, Massaro JM, Hoffmann U, DeBoer IH, Robins SJ, Vasan RS, Fox CS: Association of subcutaneous and visceral adiposity with albuminuria: the Framingham Heart Study. *Obesity (Silver Spring)* 19:1284-1289, 2011
23. Postorino M, Marino C, Tripepi G, Zoccali C: Abdominal obesity and all-cause and cardiovascular mortality in end-stage renal disease. *J Am Coll Cardiol* 53:1265-1272, 2009
24. Kovesdy CP, Czira ME, Rudas A, Ujszaszi A, Rosivall L, Novak M, Kalantar-Zadeh K, Molnar MZ, Mucsi I: Body mass index, waist circumference and mortality in kidney transplant recipients. *Am J Transplant* 10:2644-2651, 2010
25. Scales CD, Jr., Smith AC, Hanley JM, Saigal CS: Prevalence of kidney stones in the United States. *Eur Urol* 62:160-165, 2012
26. Curhan GC, Willett WC, Rimm EB, Speizer FE, Stampfer MJ: Body size and risk of kidney stones. *J Am Soc Nephrol* 9:1645-1652, 1998
27. Taylor EN, Stampfer MJ, Curhan GC: Obesity, weight gain, and the risk of kidney stones. *JAMA* 293:455-462, 2005
28. Bhaskaran K, Douglas I, Forbes H, dos-Santos-Silva I, Leon DA, Smeeth L: Body-mass index and risk of 22 specific cancers: a population-based cohort study of 5.24 million UK adults. *Lancet* 384:755-765, 2014